



# REQUEST FOR QUOTATION

---

PROJECT MANAGER  
(GATEWAY TO CAPE YORK PUBLIC ART PROJECT)

Contract No.: Q6920

# Request for Quotation

## PART 1 – PREAMBLE

Cook Shire Council invites Quotations from suitably qualified respondents to provide project management to coordinate the design, fabrication and installation of several sculptures on site at the Lakeland Gateway to Cape York Sculpture Park as described in more detail in Part 5 – Scope.

## PART 2 – GENERAL INFORMATION

1. Contract details	Q6920 – PROJECT MANAGEMENT (GATEWAY TO CAPE YORK PUBLIC ART PROJECT)
2. Communications by Respondents:	Communications regarding the Procurement Process must be submitted to <a href="http://www.vendorpanel.com.au">www.vendorpanel.com.au</a> no later than two (2) calendar days prior to the time stated in item 3 (as extended if at all, pursuant to the Procurement Process Conditions)
3. Submission of Quotation:	Responses must be submitted at <a href="http://www.vendorpanel.com.au">www.vendorpanel.com.au</a> by no later than <b>2PM on Wednesday, February 10, 2021</b> <i>Note// Adequate time must be allowed for the Quotation and all supporting documents) to be uploaded or received by this time.</i>
4. Quotation to be valid for:	90 calendar days after the time stated in Item 3 (as extended if at all, pursuant to the Procurement Process Conditions)
5. Complaints:	Complaints regarding Procurement Process to be directed to: <a href="mailto:mail@cook.qld.gov.au">mail@cook.qld.gov.au</a>

## PART 3 – PROCUREMENT PROCESS CONDITIONS

The Procurement Process is governed by, and this Request for Quotation is to be read in conjunction with, the Procurement Process Conditions available for viewing or download from [Tenders and Contracts — Cook Shire Council](#)

## PART 4 – CONTRACT

The contract with the successful Respondent shall comprise the documents identified as forming the contract in clause 4 of the Principal's standard terms and conditions which can be found at [Tenders and Contracts — Cook Shire Council](#)

## PART 5 – SCOPE

### Background:

Cook Shire Council, supported by the Queensland Government through Building Our Regions Fund, is seeking quotes for the project management, design development, fabrication and installation of public art as part of a larger tourism project.

The public art will take the form of several small sculptures or other public art installation which will be installed at the Gateway to Cape York in Lakeland. The concept designs for each piece of public art will be developed in consultation with various communities of Cape York as listed below.

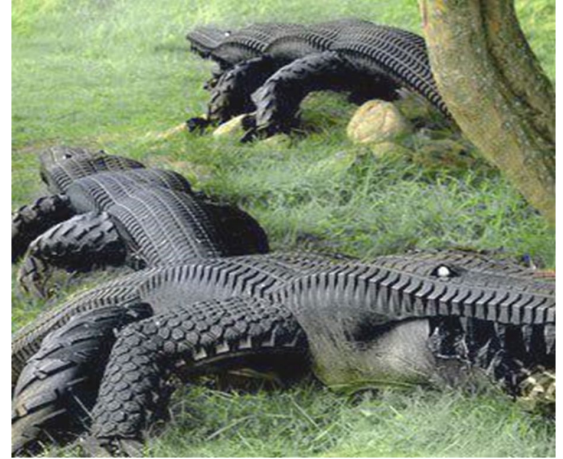
In addition to successfully managing the project and developing the designs in conjunction with each community, the successful applicant will need to coordinate and support the fabrication of the sculptures through organisation of workshops in communities. Sculpture artists will be contracted to deliver these workshops.

### Overall Project Vision:

The Gateway to Cape York is a unique attraction that is intended to encourage passing travellers and tourists to stop and view the information on display, taking time to understand more about the beauty and diversity of Cape York Peninsula.

Educational displays and artwork (to be installed as part of this project) throughout the park are intended to inform and encourage responsible behaviour as people travel through Cape York. The purpose-designed shelter houses static displays with practical information for travellers beginning their Cape York journey.

There is information about the ecology of the Cape, plants, animals, birds and environmental issues such as littering, correct bush toilet etiquette, weed seed hygiene, fire hazards, waste disposal and the importance of respecting land owners' rights. The educational displays are aimed at influencing visitors' environmental attitudes and encouraging responsible behaviour during their stay on the Cape.



### **The Gateway to Cape York Sculpture Park**

The sculpture park will be designed to represent the communities and eco-regions of Cape York Peninsula, with the site mapped in the shape of Cape York. Pathways have been constructed to represent the roads across the Peninsula.

The next phase of the project is to develop the public art to be installed at the Lakeland Gateway site representing the communities and towns. All designs will be developed in consultation with each community and approved by the relevant local LGA and Cook Shire Council.

### **Public Art Sculptures**

The vision is for each community to develop visually persuasive public art sculptures, potentially created from recycled materials depicting each unique community of Cape York Peninsula.



Above - The first public art installation at Lakeland



## Artistic Brief as Developed by the Community Reference Group

"As travellers arrive in Lakeland, they see a boat on a hill, with a fishing line and barramundi attached [this has been constructed].

When they stroll into the park over the Lakeland Gateway Bridge, they will follow a pathway, which winds gradually up the hill, at the base of which there is an opportunity to pause to take a photo of a wedge tailed eagle perched on a branch (see artist's concept drawing below) [yet to be designed and constructed].

Further up the hill, there are sea turtles, crocodiles and other sculptures made from recycled materials, amongst the rocks dotting the hill [yet to be designed and constructed]. The boat is accessible from the rear so that photographs taken from the front. Visitors are encouraged to take a place on a seat on the boat or hold onto the fishing line that is tensioned under the strain of a large stainless steel barramundi that leaps out of the landscape below."



Site of the Gateway to Cape York.

### **Requirement**

Cook Shire Council requires the services of a Project Manager/Artistic Director to coordinate the design, fabrication and installation of several sculptures on site at the Lakeland Gateway to Cape York Sculpture Park.

#### **1. Completion of major sculptures:**

- Public art installations as described above – the boat and barramundi are complete, whilst the design and fabrication of the eagle and other installations on the hill are yet to be completed.

#### **2. Fifteen Community sculptures:**

- The Project Manager will be required to organise and facilitate community consultation in which stakeholders can contribute ideas for the development of each design concept, reflecting the community's vision and values
- The relevant Local Government Area (LGA) for each of the communities below will approve the design for their community, before fabrication:
  - Cooktown
  - Lakeland
  - Laura
  - Coen
  - Portland Roads
  - Lockhart
  - NPARC
  - Mapoon
  - Weipa
  - Napranum
  - Aurukun
  - Kowanyama
  - Pormpuraaw
  - Hope Vale
  - Wujal Wujal

#### **3. Consideration in overall design:**

- Individual expression of the values and culture of each community
- Curation of the whole installation, where the park is a depiction of the whole of the Cape York Peninsula, which requires a theme tying each artwork together
- The final approved designs should be capable of fabrication through community workshops, wherever possible, with a focus on skill development and active participation from community members.

### **Planned Stages:**

#### **Stage 1**

- Develop designs in consultation with each of 15 Cape York communities
- A Community consultation plan will need to be developed and may include:
  - Stakeholder engagement
  - Surveys
  - Community meetings
  - Competitions

#### **Stage 2:**

- Work with contracted artists to deliver workshops
- Coordinate fabrication of sculptures
- Coordinate transport of sculptures to Lakeland
- Coordinate installation on site

### **Considerations:**

- All works must be completed by 30 October 2021
- The final design and artwork should challenge and inspire, but be appropriate for all age groups.
- The artwork must be completed in materials able to withstand the North Queensland elements and if necessary,

be finished with the application of an anti-graffiti product.

- The applicant must have a current Australian Business Number (ABN).
- Any risks to public health and safety must be mitigated.
- The final designs must be submitted to Cook Shire Council for final approval before commencement of works. Professional engineering will be undertaken as required.

#### **Fabrication considerations**

- Use of Recycled Materials
- Low maintenance
- Low environmental and ecological footprint
- Resistance to movement from wind
- Incorporation of light – natural, solar.
- Interactive
- Safe for interaction with children

#### **Local materials available for use:**

- Discarded farm machinery
- Scrap metal, machinery components, cogs etc.
- Rocks
- Hardwood, e.g., Cooktown ironwood



#### **PART 6 – RESPONSE SCHEDULES**



The Respondent must submit a Response in the form of the Response Schedules attached below:

The Respondent submits a Quotation for contract **Q6920 – PROJECT MANAGEMENT (GATEWAY TO CAPE YORK PUBLIC ART PROJECT)** in accordance with the Request for Quotation and these response forms. By submitting the Quotation, the Respondent acknowledges that the Quotation will remain valid and open for acceptance for the period stated in Part 2 – General Information of the Request for Quotation and that the Respondent has read and understood the terms of the contract referenced in Part 4 of the Request for Quotation.

Signature of authorised representative of Respondent:

Name of authorised representative of Respondent:

Date:

#### Response Form 1 - General details

Respondent's company or other legal entity name:

Trading name:

ABN:

ACN

*Leave blank if the Respondent is not a company*

Address:

Contact Person (if different):

Telephone:

Email:

Full name of each director:

*Leave blank if Respondent is not a company*

Full name of each partner

*Leave blank if Respondent is not a partnership*

Bank account into which payments are to be made:

Bank:

Name of Account:

BSB:

Account number:

#### Response Form 2 – Technical Capacity of the Respondent

Please provide details of works similar to this completed by the respondent

#### Response Form 3 – Pricing

Fee proposal to be returned with the submission, inclusive of all labour, travel and accommodation

#### Response Form 4 – Work procedures and methodology

The Respondent is to provide with its submission a statement of its proposed arrangements, procedures and methodologies to be adopted by it in carrying out the Works. In doing so, this statement is to address the following points:

- (a) a brief overview of methodology proposed by the Respondent for the execution of the Works;
- (b) an understanding of the project objectives and deliverables;
- (c) how it will identify potential problems that may arise during performance of the Works;
- (d) how it will overcome any such problems and provide potential solutions to those problems;

## Response Form 5 – Insurances

The Respondent is to provide details of its insurances and attach certificates of insurance for the following:

### **WORKERS COMPENSATION**

Policy Number:

Expiry Date:

### **PUBLIC LIABILITY (minimum of \$20,000,000)**

The Principal to be noted as an interested party on the policy

Insurance Company:

Policy Number:

Expiry Date:

Indemnified amount for any one occurrence:

Any Limit of Indemnity: